

VIDEO PIXEL LINEAR

High Output | Direct View | IP66



 **SGM**[®]



The **Video Pixel Linear** is one of the most powerful and flexible pixel products available. Equally useful to integrate video content in a set or facade, **VPL** gives you industry leading intensity and control.

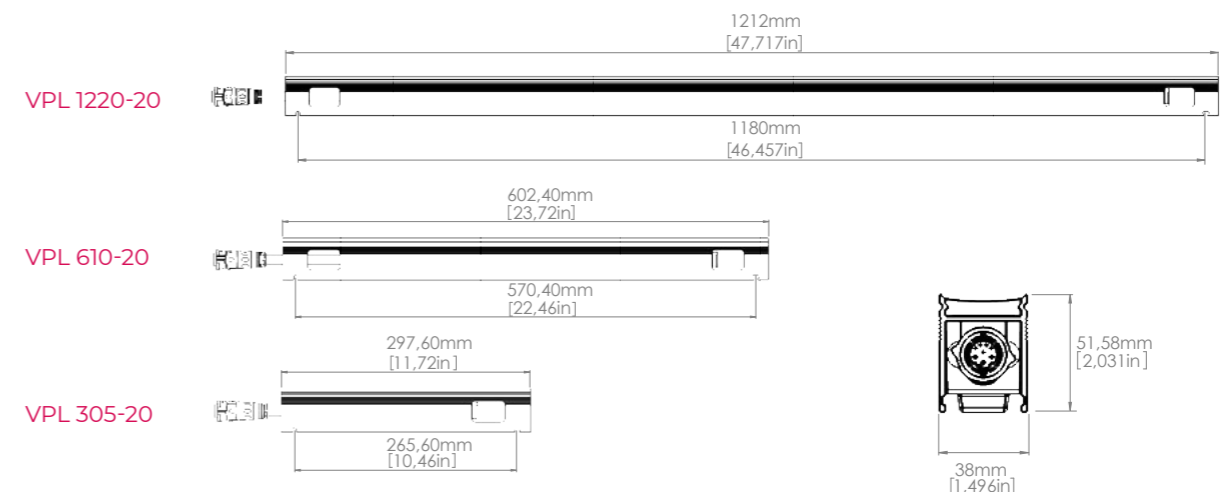
The **Video Pixel Linear** gives you the power to integrate pixel content like never before.

VPL Features

- Power and data in one cable with no need for external power supplies.
- Minimal inrush current (up to 65 units in one automatic breaker).
- 19.05 mm pixel pitch and custom viewing angles via “snap-on” lenses.
- 16 bit control, real time remote monitoring, auto addressing.
- RGB LED Clusters, 4x6mm²
- Available in 1, 2 or 4 foot lengths (305mm, 610mm, 1220mm).
- Extremely long runs of VPL on a single circuit.
- IP66, 3G, IK09, C5 rated, UV and sand resistant.

With easy integration via multiple mounting combinations, and lengths, the VPL is suitable for a wide range of applications, including:

- media façades
- touring concerts
- stadiums
- theme parks
- any fixed or temporary installation, requiring a direct view illumination.



SGM Breathes Life
Into Historic Downtown
Las Vegas with VPL.



Located adjacent to the Fremont Street Experience, the Circa Resort is one of the tallest buildings in Las Vegas.

The Circa hotel tower reaches 480 feet in height, covering 1.25 million square feet, and incorporates a separate parking structure. Utilizing 4.5 miles (7.2 kilometers) of VPLs, the dynamic façade welcomes visitors and guests, with daylight visible media effects accenting the low rise entryway and parking structure.

Circa Casino | Las Vegas

Lighting Design: Shop12/Steelman Partners

Architect: Steelman Partners

Photographer: Todd VonBastiaans

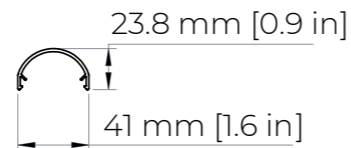
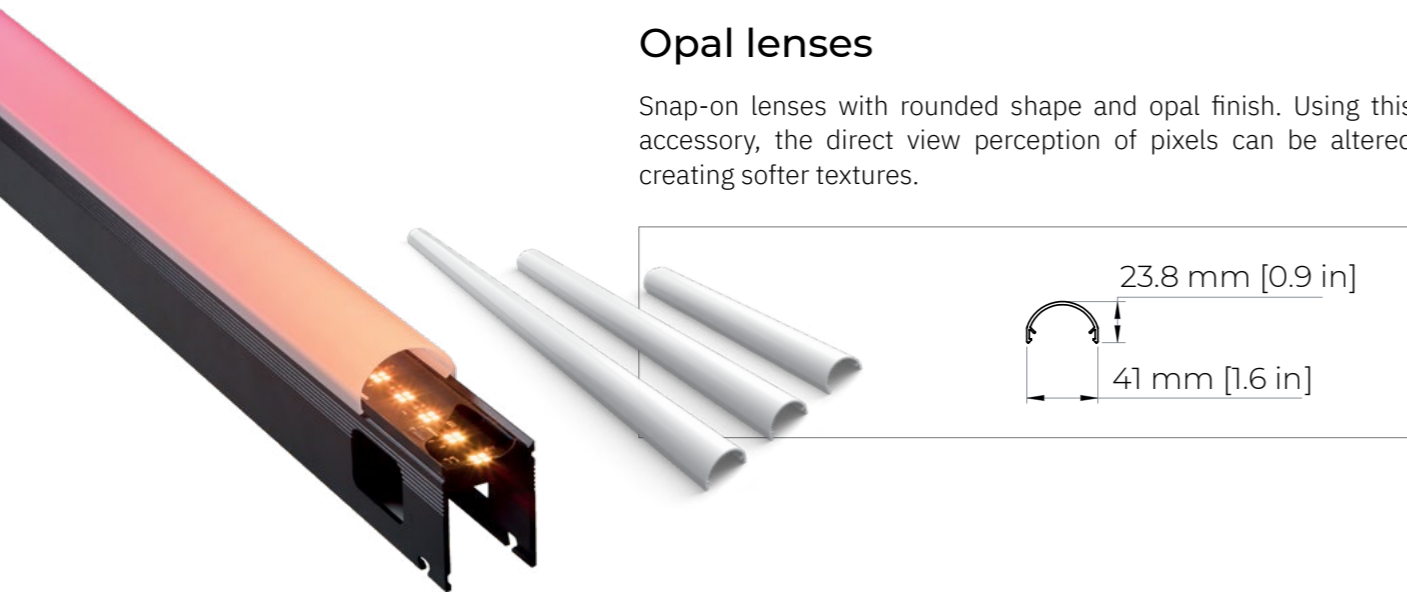


VPL snap-on lenses are available in four lengths:

- 305.2mm [1ft] (for VPL 305-20)
- 609.2mm [2ft] (for VPL 610-20)
- 1219.2mm [4ft] (for VPL 1220-20)
- 1330mm [4.3ft] for custom lengths or to span between two VPLs.

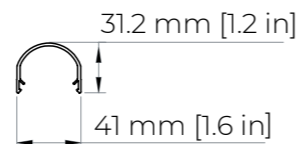
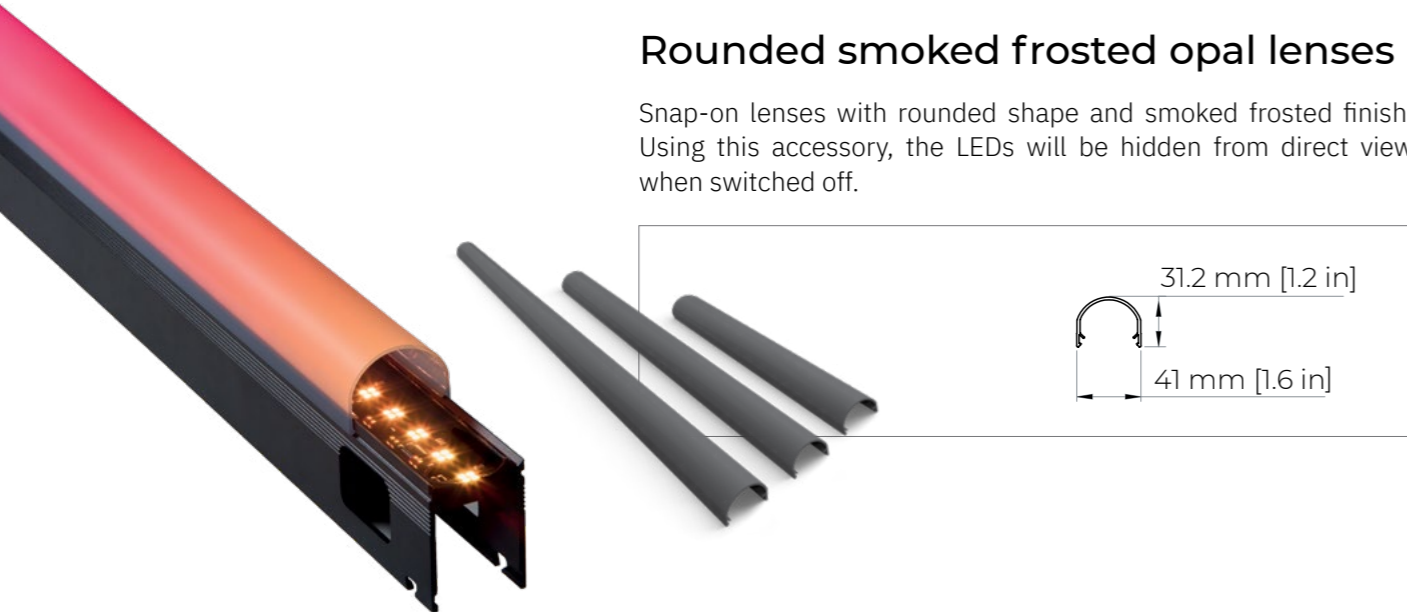
Opal lenses

Snap-on lenses with rounded shape and opal finish. Using this accessory, the direct view perception of pixels can be altered creating softer textures.



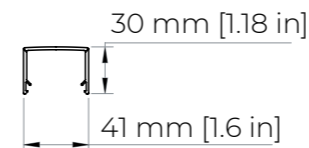
Rounded smoked frosted opal lenses

Snap-on lenses with rounded shape and smoked frosted finish. Using this accessory, the LEDs will be hidden from direct view when switched off.



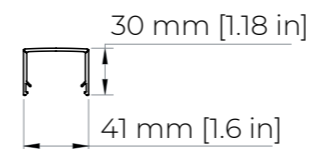
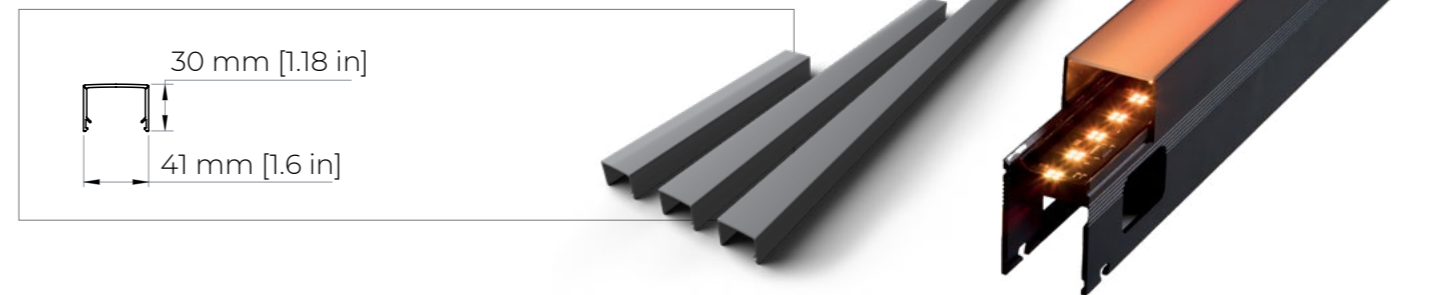
Opal / Black lenses

Snap-on lenses with flat shape and opal finish. Using this accessory, the direct view perception of pixels can be altered creating softer textures, with a flat look. The sides of this lens are black to avoid reflections and hotspots.



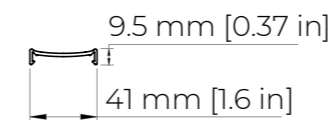
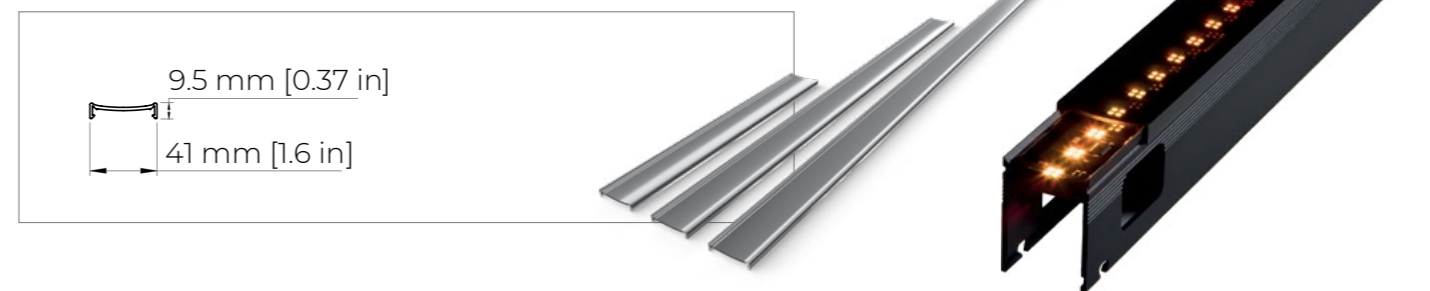
Smoked frosted lenses

Snap-on lenses with flat shape and smoked opal finish. Using this accessory, the LEDs will be hidden from direct view when switched off. The sides of this lens are black to avoid reflections and hotspots.



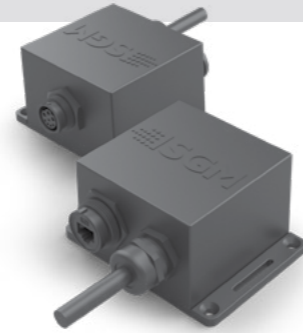
Smoked clear lenses

Snap-on lenses with flat shape and smoked black finish. Using this accessory, the LEDs will be hidden from direct view when switched off.



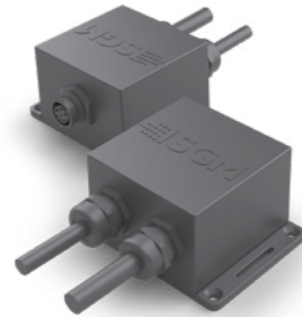
VP Power + Data Joiner

IP65 box including 1 meter [3.2 ft] power cable with bare ends, VP cable female chassis connector, and waterproof RJ45 female chassis connector. Designed to join power and data for a daisy chain to 200 – 240v mains power and Artnet / sACN.



VP Power Inserter

Water and dustproof box including 1m [3.2 ft.] power cable with bare ends, a VP female chassis connector and a 1m [3.2 ft.] VP cable ending in a VP male connector. Designed to insert power (200–240v) to an additional daisy chain of VPL units, when long extension cables or extra fixtures are needed.



VP Touring Power + Data Joiner

Touring connection box including 2 IP-rated power chassis connectors (Power In / Power Out) for power, VP cable female chassis connector, and a professional touring RJ45 female chassis connector. Designed to join power and data for a daisy chain and an initial 5 meter [16.4 ft] VP cable, in order to connect the fixtures to 200 – 240v mains power and Artnet / sACN. It can be mounted using a universal clamp or straps.



VP Extension cables

Available in 1m [3.2 ft], 2.5m [8.2 ft] and 5m [16 ft] with black finish, these waterproof VP Extension cables allow the user to wire VPL fixtures according to the desired design. It includes a multi-core cable with molded male and female VP connectors.

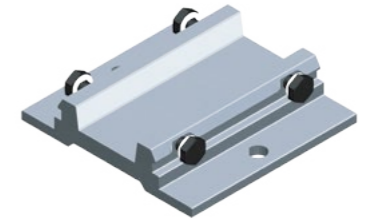


VP Custom Extension cable Kits

Available in 1m [3.2 ft] or 10m [32.8 ft] with black finish, these waterproof kits allow the user to wire VPL fixtures in customized lengths. The kit includes a multi-core cable with one molded female VP connector on one side, and bare ends on the other side, plus a separate male VP connector.

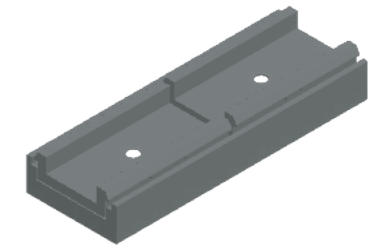
Dual Installation Bracket

Snap-on, low profile, installation bracket in anodized grey finish. Designed as a link between two VPL fixtures, for surface mounting. Connection points and spacing maintains the correct distance between each VPL, ensuring uniform pixel pitch in a string of VPL fixtures.



VPL Dual Touring bracket

Snap-on, quick-release, sliding installation mounting bracket with M12, M10 and M8 threaded holes in black finish, designed as a versatile bracket to attach any universal clamp and rig VPL fixtures in any position. One, two, or more Touring brackets can be used to mount VPL fixtures of any length.



Pivot Bracket

Milled aluminum bracket with anodized finish and connection hardware included. Part of the Touring VPL connection system to enable shapes, angles, and flexible designs to be rigged on temporary installations. Designed for use with the Touring VPL bracket, it bridges two touring VPLs to make complex shapes.



Link Plate

Milled aluminum bracket with anodized finish and connection hardware included. The link plate bridges two Pivot Brackets, enabling intersections of multiple VPLs with one connection point to a truss or support structure.



SGM Network Admin

Software for Windows platforms to set up VPL systems from SGM, available for free download. The software is intended for setting up a VPL installation via laptop.

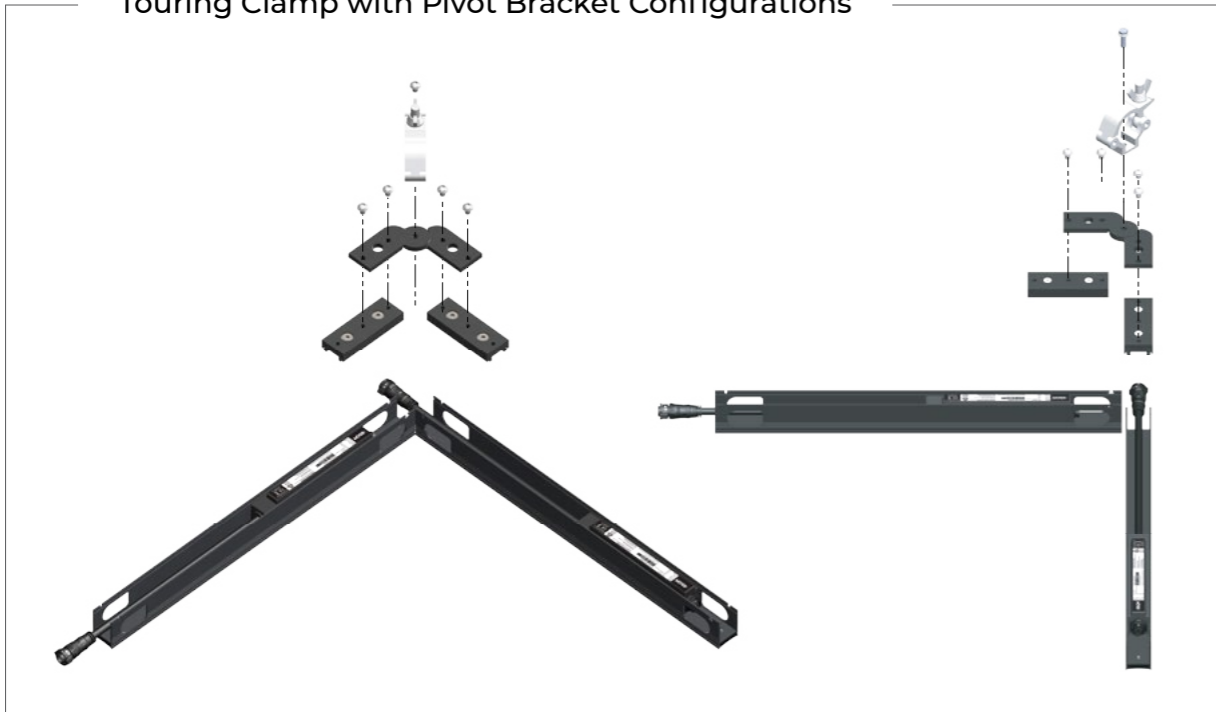


Barry Tunnel | South Wales
Designer: Jessica Lloyd Jones &
Architainment
108 x VPL 1220's
2 x VPL 6210's

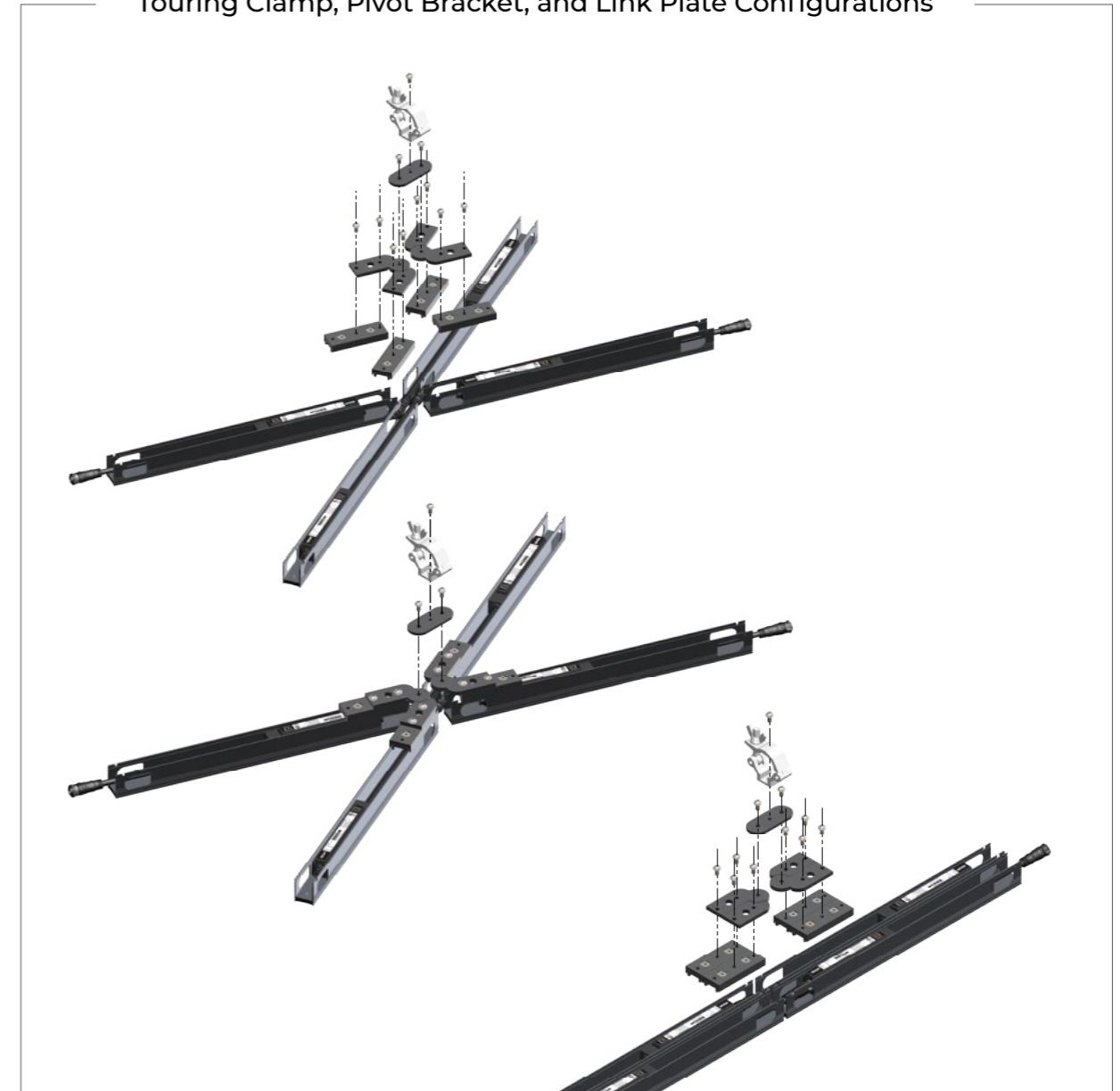
“ In the right light, at the right time,
everything is **extraordinary**”
-Aaron Rose

As a part of the Barry Making Waves initiative, the railway tunnel between Broad Street and Hood Road, now features a new lighting installation, completely transforming it from dark and unwelcoming into a bright and extraordinary space.

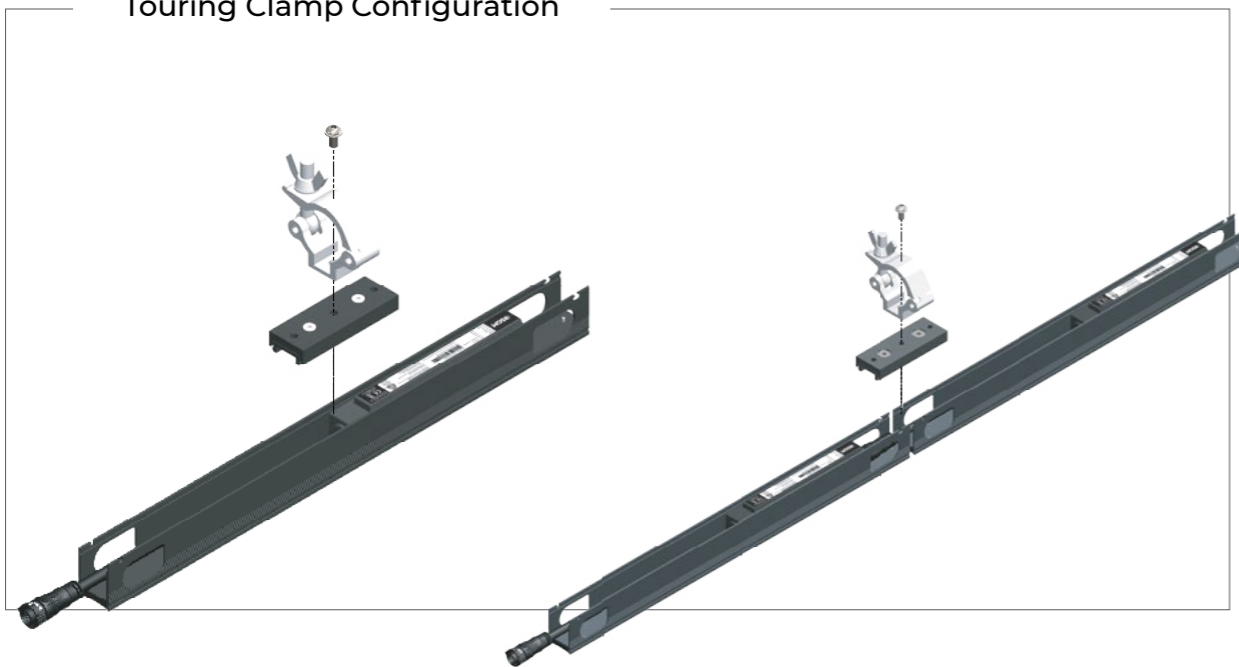
Touring Clamp with Pivot Bracket Configurations



Touring Clamp, Pivot Bracket, and Link Plate Configurations



Touring Clamp Configuration



LINK PLATE



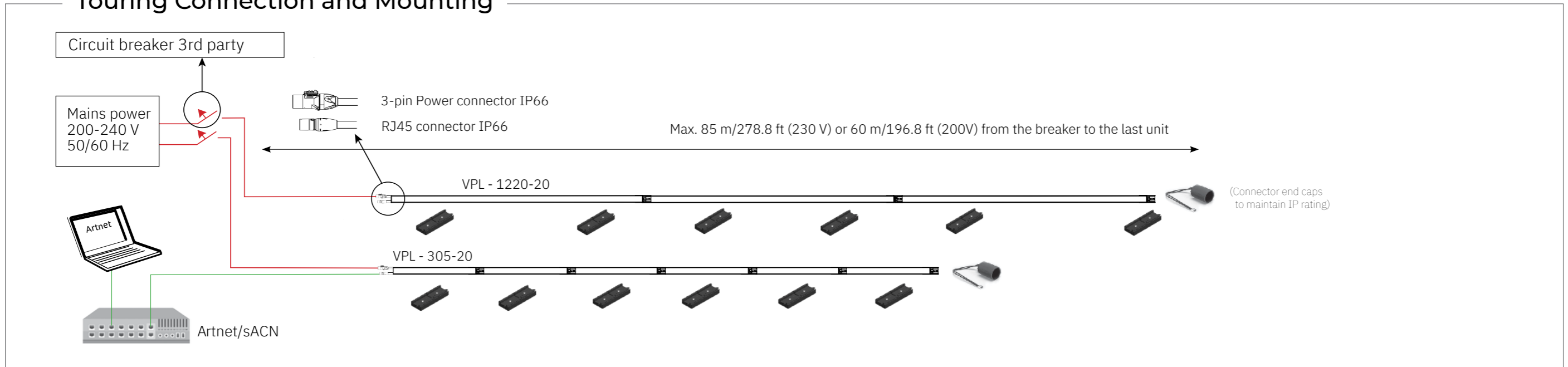
PIVOT BRACKET



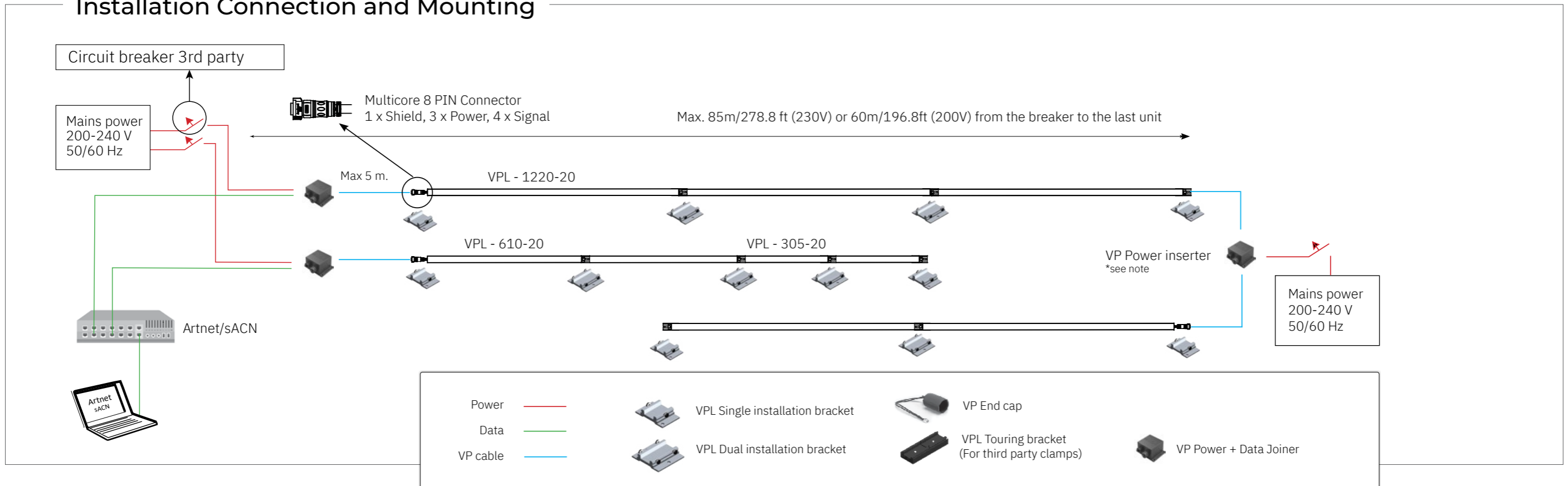
VPL TOURING CLAMP



Touring Connection and Mounting



Installation Connection and Mounting



Installation

VPL fixtures are designed to be installed in series. The maximum number of fixtures each circuit can support depends on fixture type, spacing between fixtures, circuit size, voltage and leader cable length. For further assistance regarding specific projects, please contact your local SGM distributor or support@sgmlight.com.

Power and Data

Installation cables run power and data in the same connection. The VP Power + Data Joiner are connection boxes which join power and data signals. The SGM Network Admin is then used to configure the installation according to the needs of the application.

Networking

VPL fixtures work in a wide array of network setups, using sACN and ArtNet protocols. See VPL Installation resources for guidance.

Data Redundancy

The VPL system includes data redundancy in the fixtures themselves. If one of the first fixtures loses data signal in a cabled VP string, the last unit in the string can receive data from a third-party switch. Refer to VPL Installation resources for guidance.

SPECIFICATIONS

LED expected lifetime	50,000 hours
Front / Lenses	Clear front / Snap-on lenses
Viewing angle	120°
Lightsources	Built-in Full Color LEDs
Addressable pixels	16 (1 ft.), 32 (2 ft.), 64 (4 ft.)
Pixel per meter/foot	52 px/m or 16 px/ft
Pixel pitch	19.05 mm
Pixel size	6 x 6 mm Quad LED Pixel Cluster
Color temperature range	2,000K - 10,000K (lineal CTC)
Luminance	8,400 nits (modular spacing 38 mm)
Available colors	Anodized Grey, Anodized Black
Corrosion class	C5
IP / IK rating	IP66 / IK09
Housing material	Aluminium
Front material	UV and sand-proof silicone
Fixture length	305mm, 610mm, 1,220mm (1, 2, 4 ft.)
Maximum units per circuit	65 units with 1,220mm (230v)
Testing features	Live remote monitoring, On-fixture test
AC Power, nominal	200 - 240V 50/60Hz
Electrical protection	Overload protection automatic recover
Power per meter	29 W/m
Typical power consumption	9W (1 ft.), 18W (2 ft.), 35W (4 ft.)
DMX channels per fixture	3, 6, 192 or 384 with 1,220mm length
DMX modes	4 (8 bit and 16 bit)
Protocol	ArtNet / sACN / VP-Net
Data refresh rate	Up to 120Hz
LED frequency	1Khz, 4Khz, 16Khz, 32Khz
Setting and addressing	SGM Network Admin
Temp. range, Operating	-20°C to 60°C
Temp. range, Start-up	-20°C to 60°C
Temp. range, Storage	-40°C to 80°C
Thermal protection	Automatic overtemperature protection
Installation	Multi-positional

ORDERING INFORMATION

FIXTURES

PRODUCT NAME	ITEM N.	DIMENSIONS	HOUSING COLOR
SGM VPL 305-20, AG	80080052	298 x 52 x 38 mm	Anodized Grey
SGM VPL 305-20, BL	80080056	298 x 52 x 38 mm	Anodized Black
SGM VPL 610-20, AG	80080055	602 x 52 x 38 mm	Anodized Grey
SGM VPL 610-20, BL	80080053	602 x 52 x 38 mm	Anodized Black
SGM VPL 1220-20, AG	80080053	1,212 x 52 x 38 mm	Anodized Grey
SGM VPL 1220-20, BL	80080058	1,212 x 52 x 38 mm	Anodized Black

ACCESSORIES

PRODUCT NAME	ITEM N.	DIMENSIONS	HOUSING COLOR
VPL Opal lens, 305	83061070	305.2 mm (length)	Diffused White
VPL Opal lens, 610	83061072	609.2 mm (length)	Diffused White
VPL Opal lens, 1220	83061074	1,219.2 mm (length)	Diffused White
VPL Opal lens, 1330	83061076	1,330 mm (length)	Diffused White
VPL Rounded smoked frosted opal lens, 305	83061089	298 mm (length)	Diffused Smoked Black
VPL Rounded smoked frosted opal lens, 610	83061090	602 mm (length)	Diffused Smoked Black
VPL Rounded smoked frosted opal lens, 1220	83061091	1,212 mm (length)	Diffused Smoked Black
VPL Rounded smoked frosted opal lens, 1330	83061092	1,330 mm (length)	Diffused Smoked Black
VPL Smoked clear lens, 305	83061077	305.2 mm (length)	Smoked Black
VPL Smoked clear lens, 610	83061078	609.2 mm (length)	Smoked Black
VPL Smoked clear lens, 1220	83061079	1,219.2 mm (length)	Smoked Black
VPL Smoked clear lens, 1330	83061080	1,330 mm (length)	Smoked Black
VPL Smoked frosted lens, 305	83061085	298 mm (length)	Diffused Smoked Black - Black sides
VPL Smoked frosted lens, 610	83061086	602 mm (length)	Diffused Smoked Black - Black sides
VPL Smoked frosted lens, 1220	83061087	1,212 mm (length)	Diffused Smoked Black - Black sides
VPL Smoked frosted lens, 1330	83061088	1,330 mm (length)	Diffused Smoked Black - Black sides
VPL Opal/Black, 305	83061081	305.2 mm (length)	Diffused White - Black sides
VPL Opal/Black, 610	83061082	609.2 mm (length)	Diffused White - Black sides
VPL Opal/Black, 1220	83061083	1,219.2 mm (length)	Diffused White - Black sides
VPL Opal/Black, 1330	83061084	1,330 mm (length)	Diffused White - Black sides

IP66

CE

ETL US

UK CA

ETL US
PENDING
TOURING VERSION ONLY

BRACKETS

VPL BRACKETS	ITEM N.	DIMENSIONS	HOUSING COLOR
VPL Dual installation bracket	83060635	60 x 38 x 9 mm	Anodized Grey
VPL Single installation bracket	83060634	38 x 29 x 9 mm	Anodized Grey
VPL Touring bracket	83060633	120 x 84.3 x 25 mm	Black
Link Plate	83060717	103.8 x 43 x 6	Black
Pivot bracket	83060718	111.24 x 86.4 x 8	Black
VPL Dual wing installation bracket	83060720	60 x 62 x 14	Anodized Grey
VPL touring clamp	83060722	120 x 43 x 26	Black

CONVERTERS / RDM ADMINISTRATORS

PRODUCT NAME	ITEM N.	DIMENSIONS	HOUSING COLOR
VP Power + Data Joiner	83062046	104 x 77 x 54 mm	Black
VP Power Inserter	83062047	104 x 77 x 54 mm	Black
VP Touring Power + Data Joiner	83062049	104 x 77 x 54 mm	Black

CABLES

PRODUCT NAME	ITEM N.	DIMENSIONS	HOUSING COLOR
GND/Earth wire, 1m	83062050	1,000 mm (length)	Yellow / Green
VP Extension cable, 1m	83062051	1,000 mm (length)	Black
VP Extension cable, 2.5m	83062052	2,500 mm (length)	Black
VP Extension cable, 5m	83062053	5,000 mm (length)	Black
VP Connector End cap	83062056	Not specified	Black
Crimping tool for VP connector	83062301	N/A	N/A
VP Custom Extension cable Kit, 1m	83062054	1,000 mm (length)	Black
VP Custom Extension cable Kit, 10m	83062055	10,000 mm (length)	Black

SERVICE TOOLS

PRODUCT NAME	ITEM N.	DIMENSIONS	HOUSING COLOR
Waterproof RJ-45 Kit	83062057	Not specified	Black
SGM Network Admin (software)	N/A	N/A	N/A

What is in the box

- VPL fixture(s). Each package has space for up to 16 VPL 1220-20, 32 VPL 610-20, or 64 VPL 305-20
- Printed leaflet with safety instructions

*Please note fixtures do not include accessories like brackets, extension cables, lenses or connection boxes. These items are sold separately.

All the specifications and texts are preliminary. Information may change without notice.

Developed, manufactured and tested in Denmark

- Premium user-centered design
- Flexible manufacturing process
- Short reaction time; faster deliveries
- Integrated support (R&D / production / after-sales)



TruColor+™
High Color Rendering
Enhanced Color Engine



ThermalDrive™
Advanced Temperature Control
Hybrid Cooling



WWW.SGMLIGHT.COM

IP66

**UK
CA**

CE

RoHS

